

# alsecco (UK) Ltd



Whitebridge Way, Stone, Staffordshire, ST15 8JS

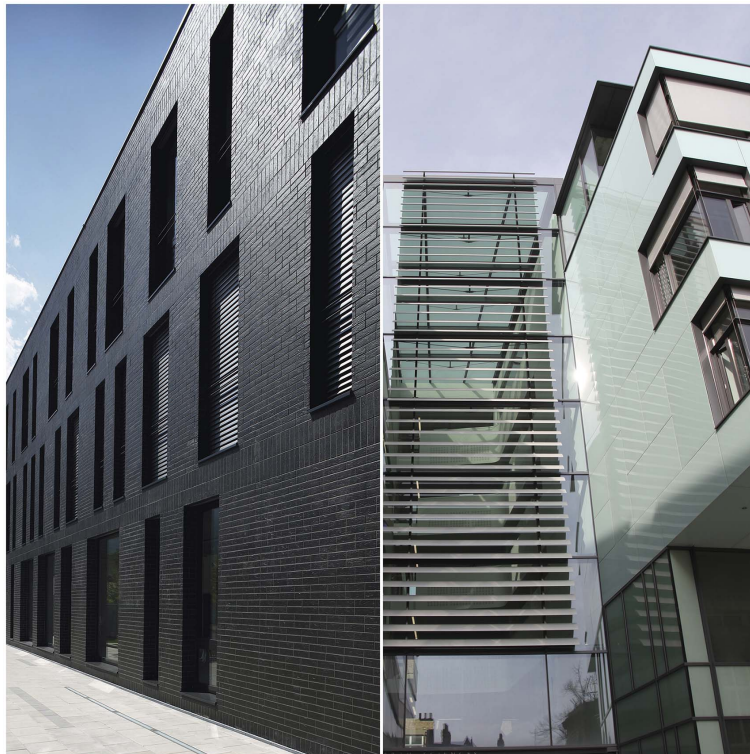
[www.alsecco.co.uk](http://www.alsecco.co.uk)

Tamara Metcalf, Tel: +44 (0)1785 818998, [marketing@alsecco.co.uk](mailto:marketing@alsecco.co.uk)

---

## CPD Overview

---



---

## Available CPD Material (3)

---



### Lightweight Natural Stone and Glass Ventilated Rainscreen Facades and the Requirements of Modern Architecture

- Historic use of stone covering both extraction and use in city architecture
- Traditional construction methods, including ashlar construction and stone on pre-cast units
  - Requirements of modern architecture considering speed of installation, weight constraints and lead times
  - Specification of ventilated rainscreen cladding including relevant Standards
  - Features and benefits of ventilated rainscreen cladding including installation sequence

Material type: Online Learning, Seminar

RIBA Core Curriculum: **Design, construction and technology**

Knowledge level: General Awareness

---



### Design and Specification Considerations for Glass Ventilated Rainscreen Facades

- This seminar covers the principles of rainscreen cladding and its development. It will help you to understand the following topics:
- The principles of ventilated rainscreen cladding
  - The applications and benefits of rainscreen cladding panels, including glass and photovoltaic systems
  - Testing and safety requirements
  - How to specify cladding systems and assess the various specification and design requirements
  - Why rainscreen cladding systems have been used on specific projects

Material type: Seminar

RIBA Core Curriculum: **Design, construction and technology**

Knowledge level: General Awareness

---



### Specification Considerations for Brick Slip and Tile Finishes for Modern Architecture

- Historic use of brick
- Modern extraction and manufacture
  - Brick slip systems and their advantages and disadvantages
  - Specification considerations for brick slips and tile finishes including materials, thermal performance and design

Material type: Seminar

RIBA Core Curriculum: **Design, construction and technology**

Knowledge level: General Awareness

---

---

## Classifications

---

### Subject/Product Areas (CI/SfB)

Finishes

Finishes > Brick and concrete panels

Wall finishes: external > External wall coatings

Wall finishes: external > External insulation of external walls

Wall finishes: external > Wall cladding panels

Finishes > Ceramic and stone panels, tiles

### RIBA Core Curriculum areas

Design, construction and technology

Knowledge level: *General Awareness*