

# Rockpanel



Wern Tarw, Pencoed, Bridgend, CF35 6NY

[www.rockpanel.co.uk](http://www.rockpanel.co.uk)

Cpd Contact, Tel: +44 (0)1656 863210, [info@rockpanel.co.uk](mailto:info@rockpanel.co.uk)

---

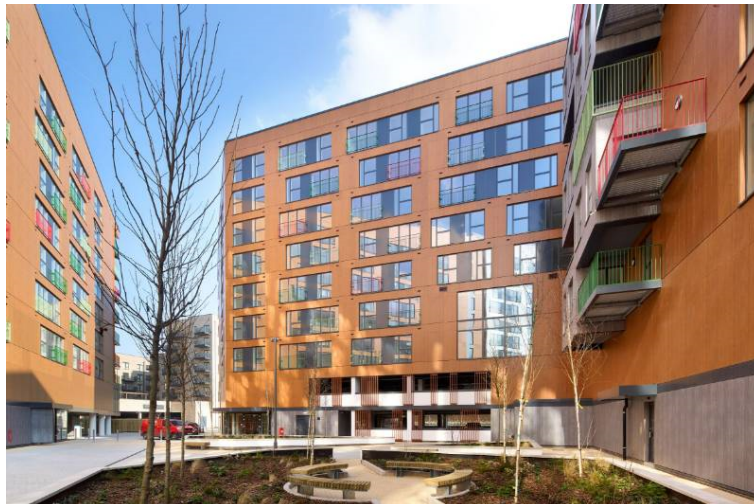
## CPD Overview

---

Rockpanel manufactures cladding for exterior facades, roof edge finishing and other detailing which is made from the volcanic rock basalt. Because of its core material, Rockpanel boards can withstand high temperatures and are classified as limited combustible: European fire class A2-s1,d0.

We are proud to be part of the ROCKWOOL Group – the world leader in stone wool solutions. Because we are built on the solid foundations of our globally recognized parent company we are in a much stronger position to be innovative, fast and flexible.

With Rockpanel you can rely on non-combustible facade cladding without having to give up on your design requirements. All the designs are available both as standard with customization options to match an exact colour or design.



---

## Available CPD Material (4)

---



Multiple formats

### From Rock to Panel: The Future Proof Cladding Solution

This CPD provides an insight into stone wool cladding, how it's made, and the benefits of applying ventilated facades for new builds and renovation.

The CPD focuses on the areas of regulatory compliance in regards to current fire safety regulations in the UK in connection with the use of non-combustible material in building construction in relation to the external walls. It provides an insight into how non-combustibility is achieved in this product, which is explained through the testing procedures and it demonstrates how the product meets a certain safety-level as set out in current regulations. Sustainability is also a topic which is included. The CPD also explains types of application from education, healthcare, high-rise and commercial structures with guidance on various installation methods and maintenance guidance.

Material type: Online Learning, Seminar

RIBA Core Curriculum: **Design, construction and technology**

Knowledge level: General Awareness

---



### Everything You Need to Know About Fire Safety and Façade Cladding

This seminar will give an overview of terminology used in the context of fire safety and façade applications. It will progress through topics including test standards, high rise and high-risk buildings, UK fire safety regulations, façade cladding types and ventilated facades. By the end of the CPD you should have a better understanding of:

- Current UK fire regulations focusing on ventilated façade construction and cladding panels/systems
- Test Methods and how to challenge manufacturers to produce the relevant certification or test evidence.
- Buildings that may need extra attention due to usage, occupants or building dimensions
- How different cladding types are produced, what the raw materials are and what this means with regard to their reaction to fire performance.
- Ventilated façade construction and be able to identify/specify all components required.
- The benefits of Stone wool cladding boards.

Material type: Seminar

RIBA Core Curriculum: **Design, construction and technology**  
**Health, safety and wellbeing**

Knowledge level: Detailed Knowledge  
General Awareness

---



### Future Proof Facades: With Stonewool Cladding Boards

This seminar will provide:

- An understanding of rainscreen benefits
- Difference between ventilated and non ventilated construction
- The benefits of lightweight boards that can be easily cut and shaped

Material type:

Seminar

RIBA Core Curriculum:

Design, construction and technology  
Sustainable architecture

Knowledge level:

General Awareness

---



### Safer Specification

This module provides an understanding of alternative materials for use in cladding and soffit and fascia applications beyond timber and PVC.

Material type:

Online Learning

RIBA Core Curriculum:

Design, construction and technology  
Sustainable architecture

Knowledge level:

General Awareness

---

---

## Classifications

---

### Subject/Product Areas (CI/SfB)

Finishes

Finishes > Fibre-based panels, sheets

Wall finishes: external > Wall cladding panels

### RIBA Core Curriculum areas

Design, construction and technology

Knowledge level: *General Awareness*

Health, safety and wellbeing

Knowledge level: *General Awareness*

Sustainable architecture

Knowledge level: *General Awareness*