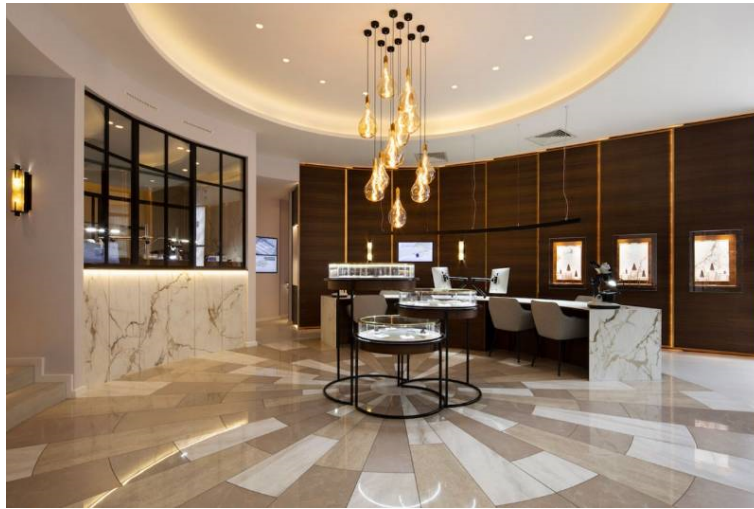


Solus Ceramics Ltd

Unit 1 Cole River Park, 285 Warwick Road, Birmingham, B11 2QX
www.solusceramics.com
Michael Irvine, Tel: +44 (0)121 753 0777, michaelirvine@solusceramics.com



CPD Overview



Available CPD Material (5)



Multiple formats

Moving Earth : Sustainability and Ceramics

Sustainability is a central driver in design. As suppliers, it is our responsibility to help you make informed decisions.

Our Sustainability Manager has created this CPD to give a detailed assessment of the climate crisis and the role that ceramics play in creating sustainable buildings.

Successful participants will be better able to understand the products they are specifying, their carbon profile, and the impact they have.

Material type: Online Learning, Seminar

RIBA Core Curriculum: **Sustainable architecture**

Knowledge level: General Awareness



An Overview of Tile Specification

An overview of issues to consider when specifying ceramic tiles. The seminar covers:

- The different types of tiles available
- Slip resistance values and methods of testing
- Risk assessments and potential hazards
- Tile design layout considerations and light reflectance values
- The Equality Act
- Cleaning and maintenance
- Installation, movement joints and fixing specification
- Security in project specification

Material type: Seminar

RIBA Core Curriculum: **Design, construction and technology**

Knowledge level: General Awareness



Don't Slip Up

Good slip resistance is essential to prevent injuries caused by slips, trips and falls. This presentation looks at the common methods of measuring slip resistance for ceramic tiles. The seminar covers:

- Slip resistance values
- The ramp test and interpretation of results
- The pendulum test and interpretation of results
- The surface roughness test and interpretation of results

Material type: Seminar

RIBA Core Curriculum: **Design, construction and technology**

Knowledge level: General Awareness



Ceramic Tiles: Meeting the Industry's Needs

The aim of this seminar is to investigate the evaluation and selection criteria for correct specification of ceramic tiles, as well as fixing methods, expansion joints, adhesives, etc.

Material type: Seminar

RIBA Core Curriculum: **Design, construction and technology**

Knowledge level: General Awareness



Firing Earth : An overview of tile specification.

Firing Earth gives a comprehensive overview of tiles and the key information specifiers need to know when selecting tiles for a project. It covers a brief history, the raw materials, and the different types of tiles available, key sustainability information and what to look for when specifying for sustainability, types of fixing methods, slip resistance ratings and how these relate to different types of projects, and the importance of Light Reflectance Values.

By the end of this CPD seminar, delegates ought to know:

1. An overview of tiles, including the history, raw ingredients, and the different types of tiles available.
2. Sustainability, including EPDs, relevant eco-certifications, sustainable manufacturing processes, and recycled materials.
3. Fixing methods, including adhesives, grouting and mechanical fixing systems.
4. Slip resistance: the different types of tests and ratings, and examples of when they are applicable.
5. Light Reflectance Values and its importance in design.

Material type:

Online Learning

Classifications

Subject/Product Areas (CI/SfB)

Finishes

Wall finishes: internal > Ceramic, glass, stone, brick internal wall finishes

Floor finishes: rigid tiles, slabs, mosaic > Tile and slab flooring

Wall finishes: external > Wall cladding tiles

RIBA Core Curriculum areas

Sustainable architecture

Knowledge level: *General Awareness*

Design, construction and technology

Knowledge level: *General Awareness*