

Ibstock Telling



Unit 4 E Station Road, Four Ashes, Wolverhampton, WV10 7DB

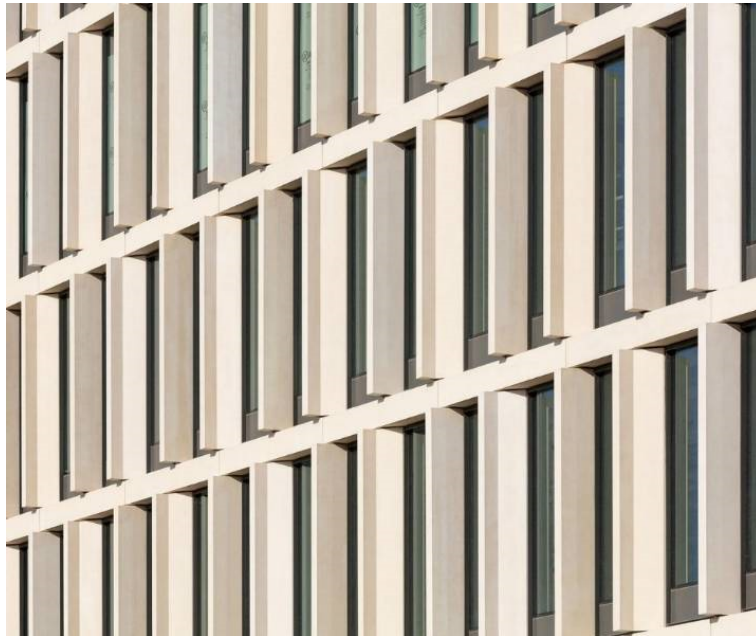
www.telling.co.uk

Mike Wood, Tel: + 44 (0)1902 797700, info@telling.co.uk

CPD Overview

Based in the West Midlands of England, Ibstock Telling offer national and international services in the design and supply of façade technologies.

Our innovative and unique capabilities for large format brick faced and plain GRC panels. Ibstock Telling GRC operates within the Ibstock Futures division developing modern methods of construction for the cladding of buildings in the medium and high rise sectors.



Available CPD Material (4)



Natural Mineral Rainscreens: Design and Specification

This seminar looks at the principles of rainscreen cladding offering a general overview, examining performance and design parameters, looks at detailing and specification, discusses maintenance and finally touches on innovations, regulations and products.

Material type:

Seminar

RIBA Core Curriculum:

Design, construction and technology
Sustainable architecture

Knowledge level:

General Awareness



Glass Reinforced Concrete (GRC) Facade Solutions

An explanation of the process for the manufacturing of glass reinforced concrete panels for use upon architectural facades.
A review of European and worldwide projects where GRC has been used over 40 years.

Material type:

Seminar

RIBA Core Curriculum:

Design, construction and technology

Knowledge level:

General Awareness



Natural Clay Rainscreens Façade Construction for Part L Regulations

The architects will learn the basic principals of good rainscreen design, focusing on materials of construction and design detail.

Material type:

Seminar

RIBA Core Curriculum:

Design, construction and technology

Knowledge level:

General Awareness



Glass-Glass PV Modules for Building Integration (BIPV)

Material type:

Seminar

Classifications

Subject/Product Areas (CI/SfB)

Finishes

Wall finishes: external > Wall cladding panels

Wall finishes: external > External wall coatings

RIBA Core Curriculum areas

Design, construction and technology

Knowledge level: *General Awareness*

Sustainable architecture

Knowledge level: *General Awareness*