

Unit 501 Access 10, Bentley Road South, Wednesbury, United Kingdom, WS10 8LQ

www.komfort.com

Specification Team, Tel: +44 (0)121 332 2550, specifiersupport@komfort.co.uk

CPD Overview

Komfort divide spaces by designing and manufacturing internal glazed and solid partitions with integrated doorsets. They are quality UK manufacturers, proud of their long standing relationships built on service, flexibility and technical support. Their knowledgeable and experienced specialists deliver the architect's vision through their extensive contractor network.

We offer a range of partitioning, door, pod and fire rated systems for educational, commercial and residential projects.

Partitioning Acoustics

Komfort's new Polar range delivers market-leading acoustic ratings of up to 54dB(Rw) for our Polar 101 double-glazed partition system and up to 41dB(Rw) for our new Polar 35 single glazed partition system, without compromising on minimal and slimline design options.

Partitioning Structural Performance

Komfort's latest partitioning systems provide you with enhanced structural stability to satisfy even the most demanding spaces. All of our new Polar systems achieve up to severe duty, with the ability to reach notable heights of up to 3.6m and achieve enhanced line loading of up to 1.5kN to BS 6180; all of which have been independently certified and tested.

Partitioning Design

With an intrinsic focus on designing equal framework aesthetics, our new Polar range offers an array of stunning, frameless glass partitioning systems available in single, double and triple-glazed options. Each Polar system is fully complementary of one another and works as one, giving you ultimate flexibility in choice.

Fire Rated Partitioning

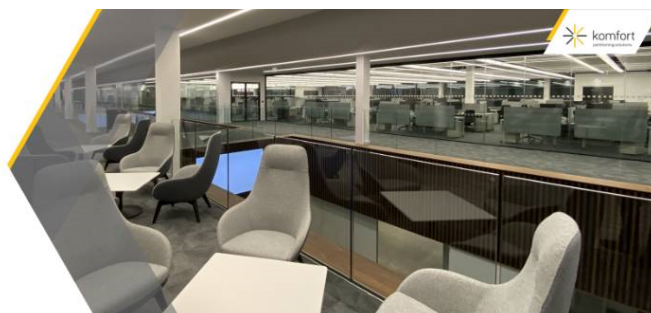
We offer both Polar Single Glazed and Polar Double Glazed fire rated partitioning achieving up to 30 minutes fire rating. Alongside this, we also offer our enhanced E & EI Defence Glass Fire Screens which can provide up to 120 minutes of protection. Our fire rated glass partitioning and glass fire screens meet very high standards of fire safety but also offers a flexible design solution for dividing a workspace or public area. All our systems are designed to the highest specification and fully tested and accredited as fire-resistant. Additionally, Komfort's Defence fire doors have been smoke tested, meeting the classification requirements of Sa (room temperature smoke protection) or S200 (hot smoke protection).

Komfort's support

We are far more than product manufacturers. At Komfort we appreciate that every interior is unique and treat it as such. Each interior design has a direct impact on individual wellbeing and the success of any business. That's why we know it is so important to design and source the most compatible products and services.

Ultimately, we want to create and design with you, help customise and bring your vision to life being your guide in the process. Our involvement at the earliest stage enables us to limit risk and maximise performance.

Contact our Specification team at specifiersupport@komfort.co.uk | +44 (0)121 332 2550



Available CPD Material (9)



Glazed Partitioning: Structural Performance

This seminar explores allowances and limitations in regard to height, width and glass type within BS 6180:2011 as an overview.

The learning aims of this CPD are:

1. To understand the benefits of using glazed partitioning.
2. To understand how British Standards integrate with the specification process of partitions (BS 6180:2011).
3. To understand safety glass types.
4. To understand Internal wind loads - recognising UK (BS), Scotland (SER) and Ireland (BCAR) standards.
5. To understanding maximum height and width allowances, joints and deflection heads and measurements.

By the end of this seminar delegates should:

1. Have a basic understanding of using glazed partitioning allowances and limitations.
2. Understand the design considerations for spaces that demand large scale partitions (extreme height or width).
3. Have gained a better understanding of how glazed partitioning behaves in case of impact, abnormal or rough use.
4. Understand the future of partitioning design and its role in dividing spaces.
5. Recognise innovation of glass and its performance and understand how different glass types operate.

Material type:

Seminar

RIBA Core Curriculum:

Design, construction and technology

Knowledge level:

General Awareness



Adaptable Spaces and Systems

What has changed in workspace design in recent years? Workspace design considerations have hugely evolved through factors such as the pandemic, sustainability, individual wellbeing and more. This CPD aims to explore the changing workspace environment and demonstrate how adaptable spaces and systems respond to these factors and meet our needs and demands. Exploring the benefits, capabilities and design features of adaptable systems such as pods and relocatable partitioning systems to remove the fear of uncertainty of the future. This design-led CPD will encourage designers and specifiers to adapt spaces with the users and the planet in mind. By the end of the CPD you should have a greater understanding of:

- To have a good understanding of the drivers for changing demands in the workspace
- Have the ability to apply this understanding to future designs
- To understand the benefits, capabilities and design features of adaptable systems such as pods and relocatable partitioning systems
- To design workspaces for the future with the users and planet in mind without a fear of uncertainty

Material type: Seminar

RIBA Core Curriculum: **Design, construction and technology**
Sustainable architecture

Knowledge level: General Awareness



Multiple formats

Fire Rated Systems and Safety for a Commercial Space

This CPD will discuss the key factors to consider when specifying fire rated partitioning and screens. It will help specifiers design with fire safety in mind for a commercial setting; exploring topics including fire terminology, regulations, classifications, and the testing process. Beyond this, it discusses the performance, applications and building design considerations for fire rated glazed partitioning and doors, fire screens and fire rated timber doors. By the end of the presentation you should have a greater understanding of:

- The key terms, ratings and classifications for fire safety
- How to specify fire rated products, including fire rated partitioning, fire screens and fire rated doors (glazed and timber)
- Key design considerations for fire safety best practice in a commercial setting
- The limitations and importance of test evidence for fire rated systems

This CPD can be delivered to you live and remotely.

Material type: Online Learning, Seminar

RIBA Core Curriculum: **Design, construction and technology**
Health, safety and wellbeing

Knowledge level: General Awareness



Multiple formats

Dividing Work Spaces for Individual's Wellbeing and High Performance Buildings

In line with the WELL Standards, this seminar explores the relationship between office design and individuals' wellbeing, with a specific focus on millennial's preferences in a working environment. From this, the seminar demonstrates how employee productivity and satisfaction are intrinsically linked to acoustic control. It will finish by exploring different future design solutions to divide spaces, including adaptable partitioning systems. By the end of the CPD you should have a greater understanding of:

- The different partitioning solutions used to divide spaces and control acoustics
- The WELL Standards and how the 10 concepts should be considered in building design
- The relevance of millennials in the workplace and their preferences in the workplace
- How dividing spaces and controlling acoustics can play a role in improving wellbeing and productivity in the workplace
- The future of partitioning design and its role in dividing spaces

This CPD can be delivered to you live and remotely.

Material type: Online Learning, Seminar

RIBA Core Curriculum: **Design, construction and technology**
Health, safety and wellbeing

Knowledge level: Detailed Knowledge
General Awareness



Multiple formats

Specifying Partitioning

This interactive seminar will provide you with a recommended process for and an understanding of the key issues faced when specifying partitioning systems. It will help you to understand the following topics:

- How to specify partitioning to meet performance requirements
- The relevant Building Regulations, standards and performance parameters, including fire standards and how to meet environmental building requirements
- Factors affecting the control of sound in a commercial environment
- The key issues and potential risks when specifying partitioning

This CPD can be delivered to you live and remotely.

Material type: Online Learning, Seminar

RIBA Core Curriculum: **Design, construction and technology**

Knowledge level: General Awareness



Multiple formats

Sound Advice

This seminar will discuss:

- Introduction to Sound and Noise
- Effects of Sound and Noise in the workplace
- Testing and Acoustic Performance of Partitions
- Designing and Specifying Partitions – Acoustic
- Room Acoustic issues

This CPD can be delivered to you live and remotely.

Material type: Online Learning, Seminar
RIBA Core Curriculum: **Design, construction and technology**
Knowledge level: General Awareness



A Sure Fire Decision - Part 2

The second seminar in this series aims to provide:

- An overview of the approved guidance documents
- Information on designing the means of escape requirements with doors
- Appreciation that performance of fire resistance doors within a partitioning does not mean compromise
- Information on product certification
- Answers to questions regards to fire performance doors and partitions

Material type: Seminar
RIBA Core Curriculum: **Design, construction and technology**
Legal, regulatory and statutory compliance
Knowledge level: General Awareness



Architectural Glass: Clear Decisions

This seminar will look at:

- Glass manufacture
- Processed glass
- Glass performance
- Decorative glass
- Types of installation

Material type: Seminar
RIBA Core Curriculum: **Design, construction and technology**
Knowledge level: General Awareness

A Sure Fire Decision - Part 1



This is a 60 minute module looking at the effects of fire and the selection of partitioning to conform with the building regulations.

Material type:

Seminar

RIBA Core Curriculum:

Design, construction and technology
Legal, regulatory and statutory compliance

Knowledge level:

General Awareness

Classifications

Subject/Product Areas (CI/SfB)

Structure

Internal walls, partitions > Relocatable, demountable partitions

Doors: parts, accessories > Door furniture

Room dividers, internal grilles etc. > Room dividers

Doors: general > Frameless glass doors

RIBA Core Curriculum areas

Design, construction and technology

Knowledge level: *General Awareness*

Sustainable architecture

Knowledge level: *General Awareness*

Health, safety and wellbeing

Knowledge level: *General Awareness*

Legal, regulatory and statutory compliance

Knowledge level: *General Awareness*