

Selectaglaze Ltd



selectaglaze

Alban Park, Hatfield Road, St Albans, AL4 0JJ
www.selectaglaze.co.uk
Marketing Team, Tel: +44 (0)1727 837271, cpd@selectaglaze.co.uk

CPD Overview

About Selectaglaze

Founded in 1966 and a Royal Warrant Holder since 2004, Selectaglaze is the UK's leading specialist in design, manufacturing and installation of secondary window systems. Selectaglaze offers the largest range of products that are made bespoke to suit design and performance requirements of your project. Manufacture takes place at the company's St Albans factory and installations are carried out by in-house teams, or throughout a network of regional partners.

Selectaglaze secondary glazing products help to make buildings more sustainable and wellbeing focused. Independently tested and certified, they will meet exacting requirements for thermal and acoustic performance, environmental control, protection against intruders, bomb blast, ballistic attack and fire. Selectaglaze teams are passionate about sympathetic design and help you create discreet solutions that complement the aesthetic of primary windows.

Typical applications

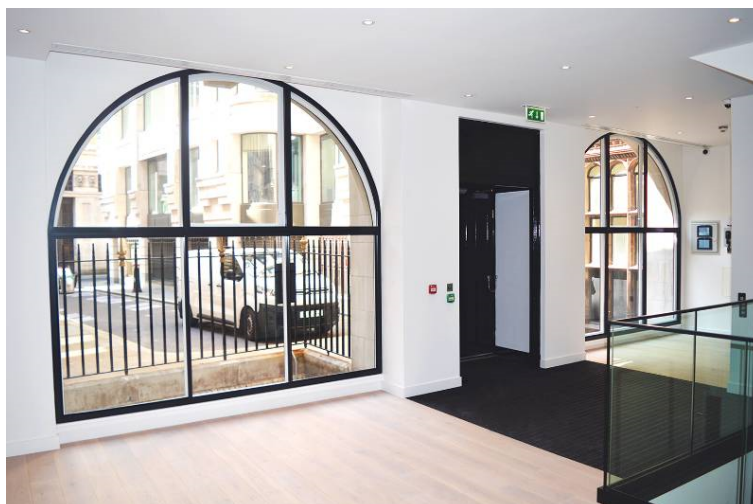
Selectaglaze secondary glazing is specified in a wide range of buildings, including residential, offices, hotels, schools, colleges, museums, town halls, churches, hospitals, theatres, pubs and government buildings. Its neat, unobtrusive design and precise installation makes it the ideal solution to preserve and retain the character of heritage buildings and satisfies the requirements of heritage and conservation bodies for use in Listed buildings. It is used in new buildings as the most effective way to reduce noise.

Most recently, Selectaglaze secondary glazing is often specified to help meet more stringent EPC requirements and carbon reduction commitments. Selectaglaze security products are currently considered as one of the protective measures in line with the new Martyn's Law legislation due in 2024.

Retrofit and sustainability

Selectaglaze teams are proud to work on projects that help preserve the architectural heritage, whilst repurposing the space and bringing the performance to modern standards. The company is a long-standing partner of AJ RetroFirst campaign.

As a provider of sustainable solutions for the built environment, Selectaglaze is also committed to reducing its own carbon footprint and this drive towards net zero is recognised through Planet Mark Certification.



Available CPD Material (6)



Multiple formats

Secondary glazing: the retrofit solution to building sustainability

This seminar aims to provide an overview of how and where secondary glazing can be used to provide thermal enhancements, acoustic insulation and added security to primary windows. Topics discussed include; specification for listed buildings, functions and benefits of secondary glazing, suitability, design considerations, sustainability and economics. By the end of the CPD you should have a greater understanding of:

- How secondary glazing meets various Building Regulation's requirements
- Considerations when specifying secondary glazing – fixing details, surrounding architectural details, features and fittings
- How to design a discreet, beneficial treatment, which is passed by Conservation Officers and aesthetically pleasing for the client
- Performance capabilities of the different types of secondary glazing
- Sustainability related to the units as well as the impact of installation on buildings and economics

This CPD can be delivered to you live and remotely

Material type: Online Learning, Seminar

RIBA Core Curriculum: **Design, construction and technology**
Sustainable architecture

Knowledge level: General Awareness



Spotlight Blog

This blog will help you to become familiar with relevant government policy and environmental issues that affect the specification of secondary glazing. Also to understand technical issues around installing secondary glazing on historical or difficult building projects. An article will be published every 10 days on one of the following strands:

- The Built Environment. This will help you to understand topical issues in the construction industry
- Secondary Glazing in Practice. This will cover common queries on secondary glazing
- Treat of the Month. This will cover a very challenging secondary glazing project from a technical point of view

Material type: Online Learning

RIBA Core Curriculum: **Design, construction and technology**
Sustainable architecture

Knowledge level: General Awareness



Multiple formats

Window Protection Through Secondary Glazing Systems

This seminar will cover the following topics:

- Introduction to secondary glazing for security benefits
- Levels of security which can be achieved and applicable standards
- Suitable products for use and their performance capabilities
- Types of security: intruder resistance, blast mitigation and ballistic attack

This CPD can be delivered to you live and remotely

Material type: Online Learning, Seminar

RIBA Core Curriculum: **Design, construction and technology**

Knowledge level: General Awareness



Factory Tour to Look at the Production Process for the Manufacture of Bespoke Secondary Glazing

This factory tour aims to provide:

- Architects, other Specifiers and Designers an overview of the manufacturing process of bespoke secondary glazing systems
- An introduction to the different types of products ranging from slimline, to mid-weight to heavy-duty security, in the showroom
- The RIBA CPD presentation will then put the manufacturing process into context showing the benefits of the final product

Material type: Factory Visit

RIBA Core Curriculum: **Design, construction and technology**

Knowledge level: General Awareness



Understanding and Specifying Secondary Glazing

This seminar aims to provide a better understanding of how modern, well designed secondary glazing can provide any building with significant improvements to the internal environment through noise insulation, thermal insulation/energy efficiency and enhanced security, particularly where listed or historic fascias are involved.

Material type: Seminar

RIBA Core Curriculum: **Design, construction and technology**

Knowledge level: General Awareness



Designing Professional Solutions for Enhancing Window Acoustics, Thermal Performance and Security

This seminar aims to provide a better understanding of how modern, well designed secondary glazing can provide any building with significant improvements to the internal environment through noise insulation, thermal insulation/energy efficiency and enhanced security, particularly where listed or historic fascias are involved.

Material type:

Seminar

RIBA Core Curriculum:

Design, construction and technology
Sustainable architecture

Knowledge level:

General Awareness

Classifications

Subject/Product Areas (CI/SfB)

Structure

Internal walls, partitions > Security partitions, counters

Windows > Aluminium windows

Services

Security > Security glazing

RIBA Core Curriculum areas

Design, construction and technology

Knowledge level: *General Awareness*

Sustainable architecture

Knowledge level: *General Awareness*