

GEZE UK Limited



Blenheim Way, Fradley Park, Lichfield, United Kingdom, WS13 8SY

www.geze.co.uk

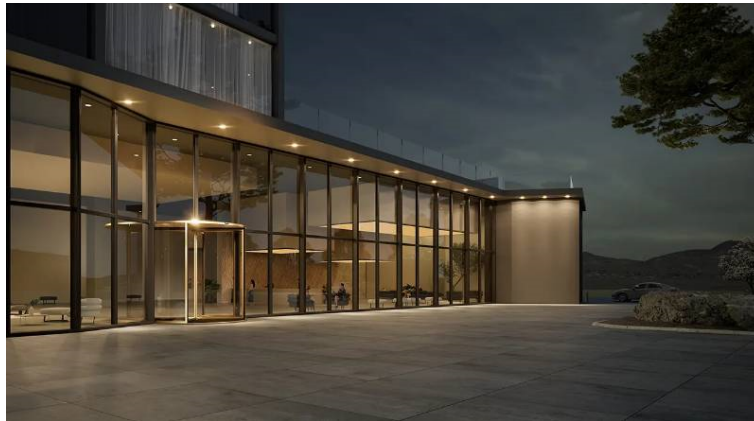
Tel: +44 (0)1543 443013, Fax: +44 (0)1543 443001

specification.uk@geze.com

CPD Overview

Founded in 1863, GEZE is a world leader in door and window control systems. Investing millions in research, development and manufacture, GEZE sets the standard for advanced door and window control technology and holds ISO 9001, 14001 & 45001 certification. We offer CPD including online platforms - Zoom, WebEx and Teams.

Providing comprehensive ranges including:



Available CPD Material (9)



Designing Effective Natural Heat and Smoke Ventilation

This seminar will give an overview of the requirements for selection and specification of natural fire and smoke venting equipment in residential and commercial properties. The emphasis of the presentation is to explain key regulations, standards and calculations and give an insight in to the key elements required for specifying these types of systems. This CPD only looks at smoke extraction systems that use 'natural' means. By the end of the seminar you should have a greater understanding of:

- The different factors when designing natural smoke and vent systems
- What key elements are required for specifying these types of systems
- All the standards and regulations that apply
- How to calculate the free area
- How different types of windows affect the calculation
- What other factors need to be considered in smoke and vent system

Material type: Seminar

RIBA Core Curriculum: **Design, construction and technology**
Health, safety and wellbeing

Knowledge level: General Awareness



Specifying, Installing and Maintaining Ironmongery for Fire Doors

This presentation explains the importance of fire safety on manual doors and their various components.

- What is a fire door?
- What are the various components of a fire door?
- How do the components work?
- Why is smoke so dangerous?
- What are the standards and regulations that apply?

Material type: Seminar

RIBA Core Curriculum: **Design, construction and technology**
Health, safety and wellbeing

Knowledge level: General Awareness



Removing Barriers to Access

This seminar will cover:

- The reasons why we need door controls
- Current legislation relating to door controls
- The impact of The Equality Act, BS 8300 and Building Regulations on door controls
- Where to use automatic doors
- Which door control devices are available

Please note that this content was assessed in 2013

Material type:

Seminar

RIBA Core Curriculum:

Design, construction and technology
Inclusive environments
Legal, regulatory and statutory compliance

Knowledge level:

General Awareness



Multiple formats

EN 16005 - Safeguarding Pedestrians from Accidents at Power Operated Doorsets

This seminar covers:

- The need for safety at automatic doors and why they are classed as a machine
- The new standard EN 16005 and why it has been introduced
- What are the implications of the new standard for architects
- Understand how the new EN 16005 standard differs from BS 7036
- Identify the danger points on automatic doors and how to overcome them
- How to comply with the standard
- What products to specify to ensure safety

Please note that this content was assessed in 2013

Material type:

Online Learning, Seminar

RIBA Core Curriculum:

Design, construction and technology
Health, safety and wellbeing
Legal, regulatory and statutory compliance

Knowledge level:

General Awareness



Glass Door Assemblies: Selection and Specification

This seminar will look at:

- Different types of glass and how they are manufactured
- Standards and legislation that apply when using glass
- Manual swing door options
- Manual sliding door options
- Frameless glass doors
- Automatic doors

Material type: Seminar

RIBA Core Curriculum: **Design, construction and technology**

Knowledge level: General Awareness



Building Better Buildings through Connectivity

Material type: Seminar



Glass Door Assemblies: Selection and Specification

This seminar will provide an overview of the properties of glass and how it can be used in door situations throughout a building.

Material type: Seminar

RIBA Core Curriculum: **Design, construction and technology**

Knowledge level: General Awareness



Safety at Powered Doors – Working with BS 7036 : 1996

This seminar aims to help you design and specify the appropriate safety level for powered pedestrian doors, including an overview and guidance to BS 7036: 1996.

Material type: Seminar

RIBA Core Curriculum: **Design, construction and technology**
Health, safety and wellbeing
Legal, regulatory and statutory compliance

Knowledge level: General Awareness

Selecting and Specifying Powered Doors for Pedestrian Use



This seminar provides a detailed view of the benefits and methods of entrance automation, helping you to evaluate the needs of an individual project and match them to the appropriate solution.

Material type:

Seminar

Classifications

Subject/Product Areas (CI/SfB)

Structure

Doors: parts, accessories > Door closers

Doors: parts, accessories > Door openers

Doors: parts, accessories > Sliding and folding door gear

External & entrance doors/screens > Shopfronts and entrance doors or screens

Doors: general > Sliding and folding doors

Services

Air conditioning, ventilation > Smoke, heat, exhaust and ventilation systems

Engineering

Ventilation and air conditioning > Smoke and heat control systems

RIBA Core Curriculum areas

Design, construction and technology

Knowledge level: *General Awareness*

Health, safety and wellbeing

Knowledge level: *General Awareness*

Inclusive environments

Knowledge level: *General Awareness*

Legal, regulatory and statutory compliance

Knowledge level: *General Awareness*